

# **horde Groupware** Enterprise Collaboration Suite

*Horde Groupware* – the free, enterprise ready, browser based collaboration suite.

Manage and share calendars, contacts, tasks and notes with the standards compliant components from the Horde Project.

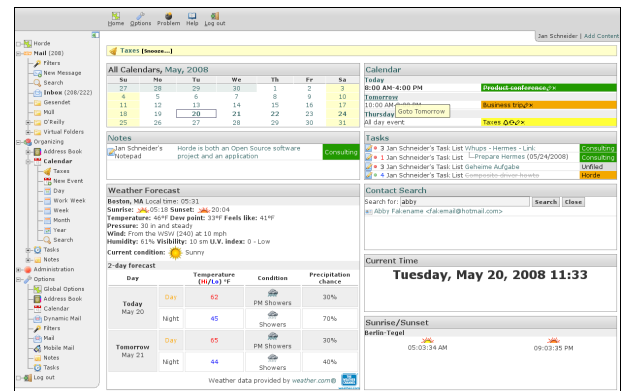
*Horde Groupware Webmail Edition* – the complete, stable communication solution.

Combine the successful *Horde Groupware* with one of the most popular webmail applications available and trust in ten years experience in open source software development.

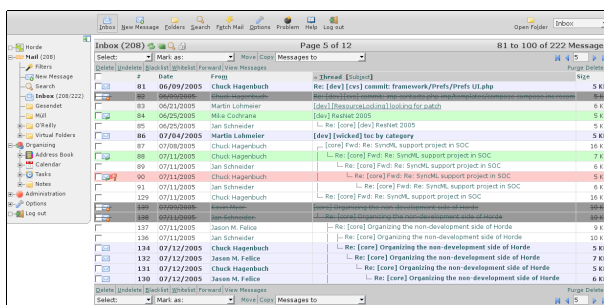
Extend the *Horde Groupware* suites with any of the Horde modules, like file manager, bookmark manager, photo gallery, wiki, and many more.

## Core features of Horde Groupware

- Public and shared resources (calendars, address books, task lists etc.)
- Unlimited resources per user
- 40 translations, right-to-left languages, unicode support
- Global categories (tags)
- Customizable portal screen with applets for weather, quotes, etc.
- 27 different color themes
- Online help system
- Import and export of external groupware data
- Synchronization with PDAs, mobile phones, groupware clients
- Integrated user management, group support and permissions system
- User preferences with configurable default values
- WCAG 1.0 Priority 2/Section 508 accessibility



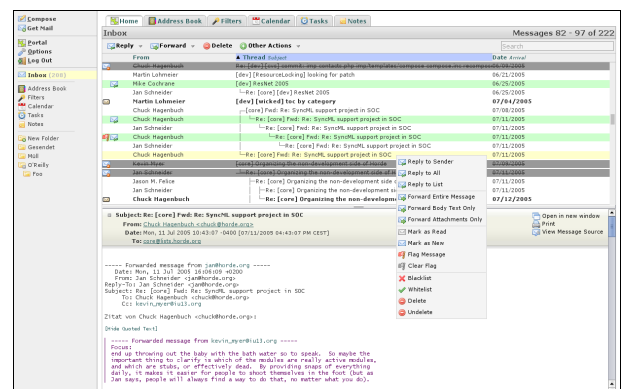
## Webmail



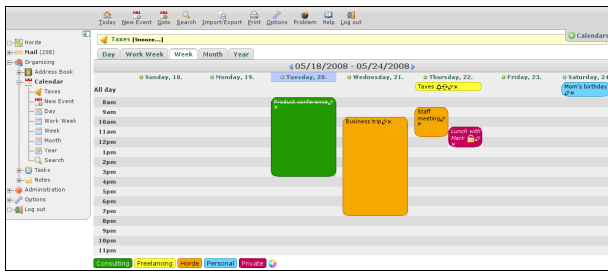
- AJAX, mobile and traditional browser interfaces
- IMAP and POP3 support
- Message filtering
- Message searching
- HTML message composition with WYSIWIG editor
- Spell checking
- Built in attachment viewers
- Encrypting and signing of messages (S/MIME and PGP)
- Quota support

## AJAX Webmail

- Application-like user interface
- Classical 3-pane layout
- Message drag and drop
- Context menus
- Frameless interface

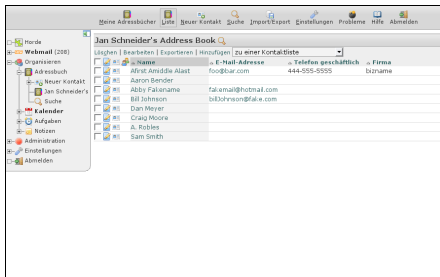


# Calendar



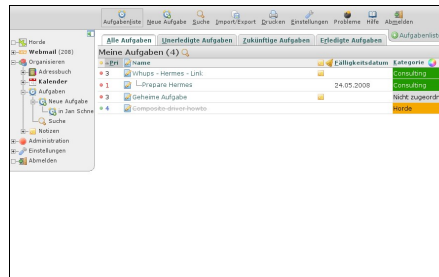
- Day, week, work week, month and year views
- Recurring and all-day events
- Alarms with email notifications
- Simple and advanced search forms
- Meeting planning, also with other calendar applications
- Email notification about changed events
- Remote calendar subscriptions
- External client integration (Outlook, Apple iCal, Mozilla Sunbird)
- iCalendar and iTip support

# Contacts



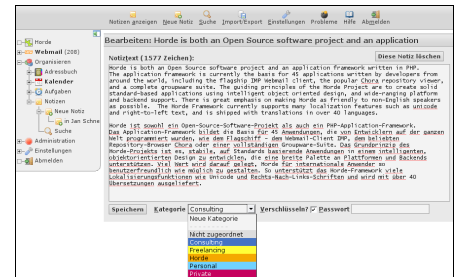
- Distribution lists/email groups, also across address books
- Simple and advanced search forms
- Customizable address book listings
- vCard support
- Address book pager (rolodex)
- Customizable contact fields
- Integration of existing address books

# Tasks



- Priorities and due dates
- Searchable descriptions
- Email notification about changed tasks
- Integration into external clients like Apple iCal, Mozilla Sunbird, Microsoft Outlook
- vTodo support

# Notes



- Fulltext search
- Character counter
- Encrypted notes

# Advanced features

- Keyboard navigation
- Full character set support for folders names and email messages
- Conversation view of all messages in a thread
- Folder tree in left menu pane
- Message previews in mailbox view
- Downloading of message attachments in a ZIP file
- Fetching of messages from external email accounts
- Flexible, individual alias addresses
- IMAP folder subscriptions
- Shared IMAP folders
- Graphical emoticons
- Support for mailing list headers
- Forwarding of multiple messages at once
- Attachments sent as links

# Support options

- Paid consultancy: <http://www.horde.org/consulting/>
- Public mailing lists: <http://www.horde.org/mail/>
- Wiki website: <http://wiki.horde.org/>
- Frequently Asked Questions: <http://wiki.horde.org/FAQ>
- Bugtracker: <http://bugs.horde.org/>

# Professional services availability

- Pre-installation consulting services
- Troubleshooting, bug fixing and performance optimization of existing installations
- Installation of complete Horde suites and integration with existing infrastructure
- Customization of existing modules or designs
- Individual extension of existing software features
- Development of new modules

### Requirements

**Operating System:** Linux, Windows, FreeBSD, OpenBSD, Mac, Solaris, etc.

**Web Server:** Apache, IIS, lighttpd, etc.

**PHP Version:** 4.3, 5.x

**RDBMS (recommended):** MySQL, PostgreSQL, Oracle, MS SQL-Server, SQLite, etc.

**LDAP Server (optional):** OpenLDAP, eDirectory, Active Directory, etc.

**Mail System (optional):** SMTP or Sendmail style (Postfix, Sendmail, Qmail, Exim, etc.)

**IMAP/POP3 Server (Webmail Edition):** Cyrus, Courier, UW-IMAP, Dovecot, Exchange, etc.

**Filter backend (optional, Webmail Edition):** Sieve, Procmail, Maildrop